

# КМ, КМК

## Технические характеристики

### По вопросам продаж и поддержки обращайтесь:

Алматы (7273)495-231	Казань (843)206-01-48	Новокузнецк (3843)20-46-81	Смоленск (4812)29-41-54
Архангельск (8182)63-90-72	Калининград (4012)72-03-81	Новосибирск (383)227-86-73	Сочи (862)225-72-31
Астрахань (8512)99-46-04	Калуга (4842)92-23-67	Омск (3812)21-46-40	Ставрополь (8652)20-65-13
Барнаул (3852)73-04-60	Кемерово (3842)65-04-62	Орел (4862)44-53-42	Сургут (3462)77-98-35
Белгород (4722)40-23-64	Киров (8332)68-02-04	Оренбург (3532)37-68-04	Тверь (4822)63-31-35
Брянск (4832)59-03-52	Краснодар (861)203-40-90	Пенза (8412)22-31-16	Томск (3822)98-41-53
Владивосток (423)249-28-31	Красноярск (391)204-63-61	Пермь (342)205-81-47	Тула (4872)74-02-29
Волгоград (844)278-03-48	Курск (4712)77-13-04	Ростов-на-Дону (863)308-18-15	Тюмень (3452)66-21-18
Вологда (8172)26-41-59	Липецк (4742)52-20-81	Рязань (4912)46-61-64	Ульяновск (8422)24-23-59
Воронеж (473)204-51-73	Магнитогорск (3519)55-03-13	Самара (846)206-03-16	Уфа (347)229-48-12
Екатеринбург (343)384-55-89	Москва (495)268-04-70	Санкт-Петербург (812)309-46-40	Хабаровск (4212)92-98-04
Иваново (4932)77-34-06	Мурманск (8152)59-64-93	Саратов (845)249-38-78	Челябинск (351)202-03-61
Ижевск (3412)26-03-58	Набережные Челны (8552)20-53-41	Севастополь (8692)22-31-93	Череповец (8202)49-02-64
Иркутск (395)279-98-46	Нижний Новгород (831)429-08-12	Симферополь (3652)67-13-56	Ярославль (4852)69-52-93
Россия (495)268-04-70	Киргизия (996)312-96-26-47	Казахстан (7172)727-132	

# KM counternut



## KM

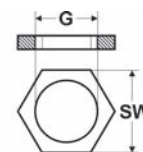
The counternut from galvanic nickel-coated brass.

## Material

Brass, nickel plated

## Technical data

Temperature range: up to +200°C



## Dimensions

G Thread size inside  
SW Spanner size

### metric thread - female

Part no.	Size Metr.	Spanner size mm	Unit	
90175	M12 x 1,5	15,0	100	-
90176	M16 x 1,5	19,0	100	-
90177	M20 x 1,5	24,0	100	-
90178	M25 x 1,5	30,0	100	-
90179	M32 x 1,5	36,0	100	-
90180	M40 x 1,5	46,0	50	-
90181	M50 x 1,5	60,0	25	-
90182	M63 x 1,5	70,0	25	-

### metric thread - female - KM-XXL - for large cable diameters

Part no.	Size Metr.	Spanner size mm	Unit	
98314	M72 x 2,0	80,0	1	-
90067	M75 x 1,5	80,0	1	-
90489	M80 x 2,0	95,0	1	-

### PG thread - female

Part no.	Size PG	Spanner size mm	Unit	
90610	7	15,0	100	-
90611	9	18,0	100	-
90612	11	21,0	100	-
90613	13,5	23,0	100	-
90614	16	26,0	100	-
90615	21	32,0	100	-
90616	29	41,0	100	-
90617	36	51,0	50	-
90618	42	60,0	50	-
90619	48	64,0	50	-

### NPT thread - female

Part no.	Size Inches	Spanner size mm	Unit	
905870	1/2"	27,0	50	-
905871	3/4"	32,0	50	-
905872	1"	36,0	25	-
905873	1 1/4"	46,0	25	-
905874	1 1/2"	54,0	10	-
905875	2"	70,0	10	-

Continuation ▶

**KM** counternut**BSP thread - female**

Part no.	Size BSP	Spanner size mm	Unit	
90186	G 3/8"	19,0	100	-
90187	G 1/2"	24,0	100	-
90189	G 3/4"	30,0	100	-
90190	G 1"	38,0	100	-
90193	G 1 1/2"	51,0	50	-
90195	G 2"	66,0	50	-

**BSP thread - female - KM-XXL - for large cable diameters**

Part no.	Size BSP	Spanner size mm	Unit	
90197	G 2 1/2"	80,0	1	-
90198	G 3"	95,0	1	-
90199	G 4"	125,0	1	-
97785	G 5"	150,0	1	-

Dimensions and specifications may be changed without prior notice.

**KM-EMV**

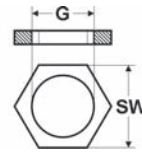
- The counternut with cutting edges for secure fixing of EMC cable glands
- for cutting through painted surfaces to ensure optimum contact with equipotential bonding
- increased vibration resistance

**Material**

Brass, nickel plated

**Technical data**

Temperature range: up to +200°C

**Dimensions**

G Thread size inside  
SW Spanner size

**metric thread - female**

Part no.	Size Metr.	Spanner size mm	Unit	
90165	M12 x 1,5	15,0	100	-
90166	M16 x 1,5	19,0	100	-
90167	M20 x 1,5	24,0	100	-
90168	M25 x 1,5	30,0	100	-
90169	M32 x 1,5	36,0	100	-
90170	M40 x 1,5	46,0	50	-
90171	M50 x 1,5	60,0	50	-
90172	M63 x 1,5	70,0	25	-

**metric thread - female - KM-EMV-XXL - for large cable diameters**

Part no.	Size Metr.	Spanner size mm	Unit	
99875	M72 x 2,0	80,0	1	-
93209	M75 x 1,5	80,0	1	-
98698	M80 x 2,0	95,0	1	-

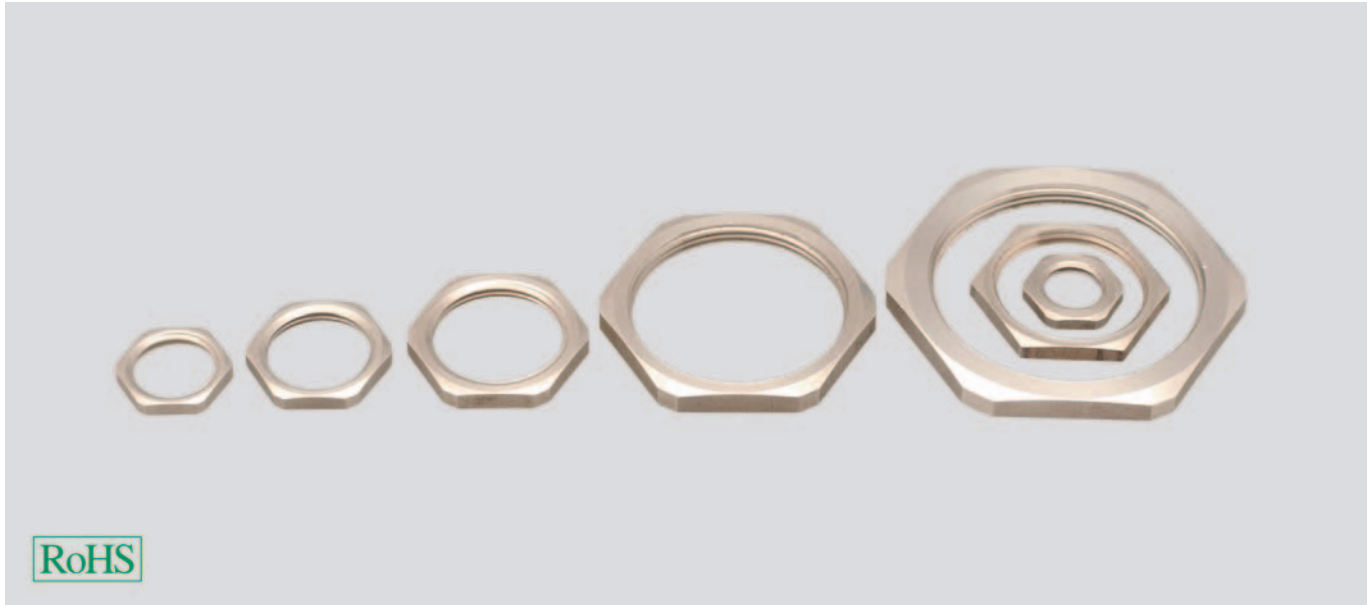
**PG thread - female**

Part no.	Size PG	Spanner size mm	Unit	
97243	7	15,0	100	-
97244	9	18,0	100	-
97166	11	21,0	100	-
97167	13,5	23,0	100	-
97168	16	26,0	100	-
97169	21	32,0	100	-
97170	29	41,0	50	-
97171	36	51,0	25	-
97245	42	60,0	25	-
97246	48	64,0	25	-

Dimensions and specifications may be changed without prior notice.

# KM-INOX counternut

stainless steel



## KM-INOX

The counternut made of stainless steel.

## Material

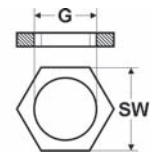
Stainless steel 1.4305 / AISI 303

## Technical data

Temperature range: up to +200°C

## Application

- Plant and machine construction
- Robot construction
- Automation technology
- Vehicle construction and shipbuilding
- Rail technology
- Installation technology
- Control cabinet construction



## Dimensions

G Thread size inside  
SW Spanner size

### metric thread - female

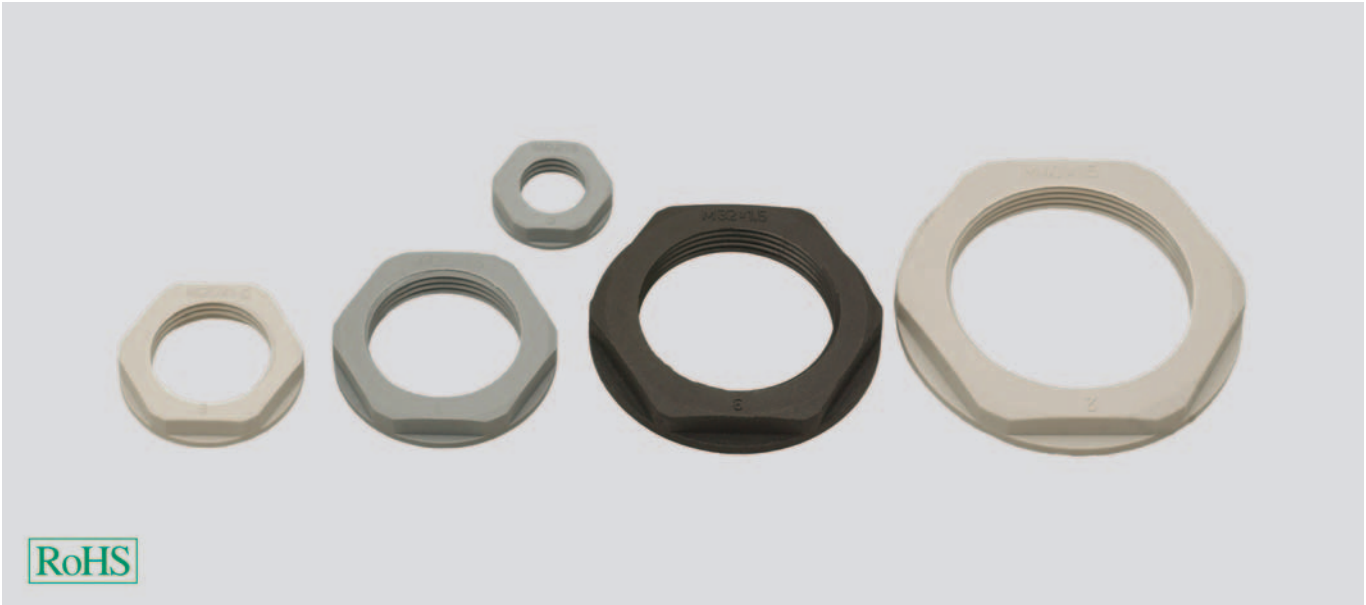
Part no.	Size Metr.	Spanner size mm	Unit	
920605	M12 x 1,5	15,0	100	-
920606	M16 x 1,5	19,0	100	-
920607	M20 x 1,5	24,0	100	-
920608	M25 x 1,5	30,0	100	-
920609	M32 x 1,5	36,0	50	-
920610	M40 x 1,5	46,0	50	-
920611	M50 x 1,5	60,0	10	-
920612	M63 x 1,5	70,0	10	-

### PG thread - female

Part no.	Size PG	Spanner size mm	Unit	
92970	7	17,0	100	-
92971	9	19,0	100	-
92972	11	22,0	100	-
92973	13,5	24,0	100	-
92974	16	27,0	100	-
92975	21	32,0	100	-
92976	29	41,0	50	-
92977	36	60,0	25	-

Dimensions and specifications may be changed without prior notice.

# KMK-PA-MB counternut with collar



## KMK-PA-MB

The counternut made of polyamide.  
The counternut with collar has a bigger sealing area - sealing with an additional O-ring will be simplified.

### Application

- Plant and machine construction
- Automation technology
- Vehicle construction and shipbuilding
- Installation technology
- Control cabinet construction

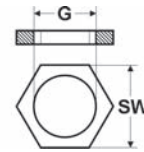
### Material

Polyamide PA 6

- halogen-free
- phosphor-free
- silicone-free
- cadmium-free

### Technical data

Temperature range: -40°C up to +100°C



### Dimensions

G Thread size inside  
SW Spanner size

### metric thread – female

Part no. light grey RAL 7035	Part no. dark grey RAL 7001	Part no. black RAL 9005	Size Metr.	Spanner size mm	Unit	
97816	94260	98163	M12 x 1,5	18	100	-
97817	94261	98164	M16 x 1,5	22	100	-
97818	94262	98165	M20 x 1,5	26	100	-
97819	94263	98166	M25 x 1,5	32	100	-
97820	94264	98167	M32 x 1,5	41	100	-
97821	94265	98168	M40 x 1,5	50	50	-
97822	94266	98169	M50 x 1,5	60	50	-
97823	94267	98170	M63 x 1,5	75	25	-

### PG thread – female

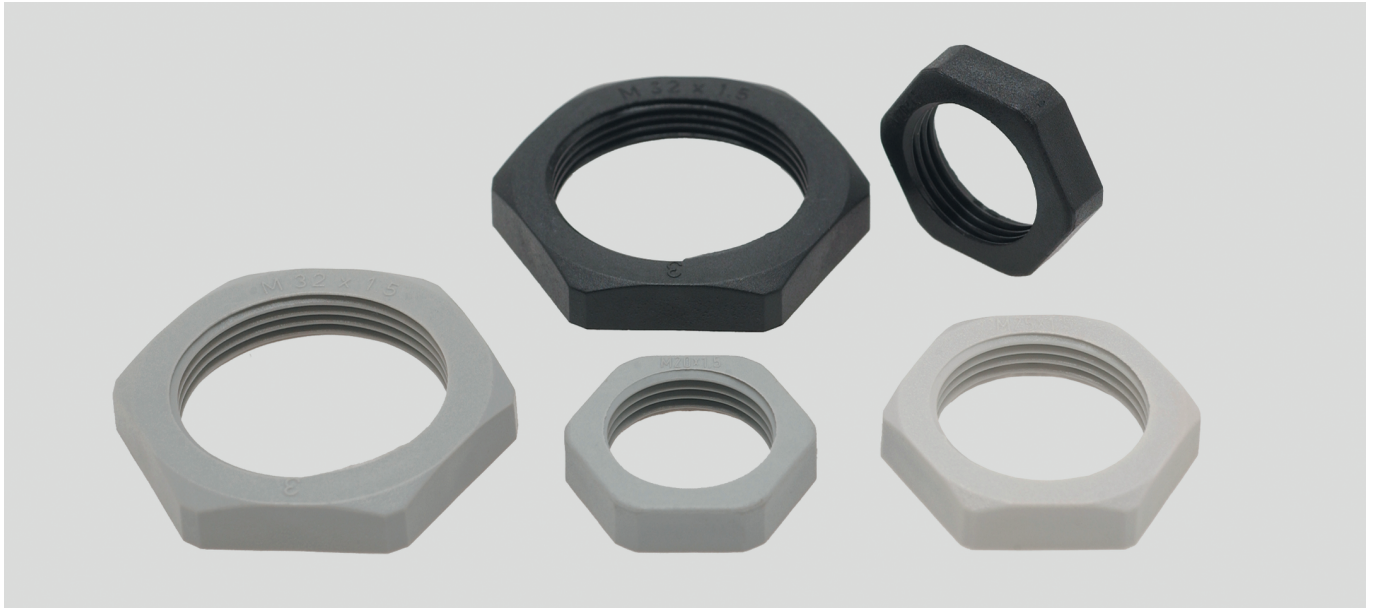
Part no. light grey RAL 7035	Part no. dark grey RAL 7001	Part no. black RAL 9005	Size PG	Spanner size mm	Unit	
90710	94250	96458	7	19	100	-
90711	94251	96228	9	22	100	-
90712	94252	96459	11	24	100	-
90713	94253	96460	13,5	27	100	-
90714	94254	96461	16	30	100	-
90715	94255	96176	21	36	100	-
90716	94256	96177	29	46	50	-
90717	94257	96462	36	60	25	-
90718	94258	96463	42	65	25	-
90719	94259	96464	48	70	25	-

### NPT thread – female

Part no. light grey RAL 7035	Part no. dark grey RAL 7001	Part no. black RAL 9005	Size NPT	Spanner size mm	Unit	
97317	90870	90875	3/8"	22	100	-
97316	90871	90876	1/2"	27	100	-
97315	90872	90877	3/4"	33	100	-
98366	90873	90878	1"	47	50	-

Dimensions and specifications may be changed without prior notice.

# KMK-PA-OB counternut without collar



## KMK-PA-OB

Locknut made of polyamide without collar.

## Material

Polyamide PA 6

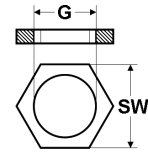
## Technical data

Temperature range: -40°C up to +100°C

## Application

- Plant and machine construction
- Robot construction
- Automation technology
- Vehicle construction and shipbuilding
- Rail technology
- Installation technology
- Control cabinet construction

- halogen-free
- phosphor-free
- silicone-free
- cadmium-free



## Dimensions

G Thread size inside  
SW Spanner size

### metric thread – female

Part no. light grey RAL 7035	Part no. dark grey RAL 7001	Part no. black RAL 9005	Size Metr.	Spanner size mm	Unit	Net EUR/100 items at a purchase of		
						up to 100	101 - 500	501 - 1000
94630	94640	94650	M12 x 1,5	18	100	o. r.	o. r.	o. r.
94631	94641	94651	M16 x 1,5	22	100	o. r.	o. r.	o. r.
94632	94642	94652	M20 x 1,5	26	100	o. r.	o. r.	o. r.
94633	94643	94653	M25 x 1,5	32	100	o. r.	o. r.	o. r.
94634	94644	94654	M32 x 1,5	41	100	o. r.	o. r.	o. r.
94635	94645	94655	M40 x 1,5	50	50	o. r.	o. r.	o. r.
94636	94646	94656	M50 x 1,5	60	50	o. r.	o. r.	o. r.
94637	94647	94657	M63 x 1,5	75	25	o. r.	o. r.	o. r.

### PG thread – female

Part no. light grey RAL 7035	Part no. dark grey RAL 7001	Part no. black RAL 9005	Size PG	Spanner size mm	Unit	Net EUR/100 items at a purchase of		
						up to 100	101 - 500	501 - 1000
94270	94280	94290	7	19	100	o. r.	o. r.	o. r.
94271	94281	94291	9	22	100	o. r.	o. r.	o. r.
94272	94282	94292	11	24	100	o. r.	o. r.	o. r.
94273	94283	94293	13,5	27	100	o. r.	o. r.	o. r.
94274	94284	94294	16	30	100	o. r.	o. r.	o. r.
94275	94285	94295	21	36	100	o. r.	o. r.	o. r.
94276	94286	94296	29	46	50	o. r.	o. r.	o. r.
94277	94287	94297	36	60	25	o. r.	o. r.	o. r.
94278	94288	94298	42	65	25	o. r.	o. r.	o. r.
94279	94289	94299	48	70	25	o. r.	o. r.	o. r.

Dimensions and specifications may be changed without prior notice.

o. r. = on request

**По вопросам продаж и поддержки обращайтесь:**

Алматы (7273)495-231  
Архангельск (8182)63-90-72  
Астрахань (8512)99-46-04  
Барнаул (3852)73-04-60  
Белгород (4722)40-23-64  
Брянск (4832)59-03-52  
Владивосток (423)249-28-31  
Волгоград (844)278-03-48  
Вологда (8172)26-41-59  
Воронеж (473)204-51-73  
Екатеринбург (343)384-55-89  
Иваново (4932)77-34-06  
Ижевск (3412)26-03-58  
Иркутск (395)279-98-46  
Россия (495)268-04-70

Казань (843)206-01-48  
Калининград (4012)72-03-81  
Калуга (4842)92-23-67  
Кемерово (3842)65-04-62  
Киров (8332)68-02-04  
Краснодар (861)203-40-90  
Красноярск (391)204-63-61  
Курск (4712)77-13-04  
Липецк (4742)52-20-81  
Магнитогорск (3519)55-03-13  
Москва (495)268-04-70  
Мурманск (8152)59-64-93  
Набережные Челны (8552)20-53-41  
Нижний Новгород (831)429-08-12  
Киргизия (996)312-96-26-47

Новокузнецк (3843)20-46-81  
Новосибирск (383)227-86-73  
Омск (3812)21-46-40  
Орел (4862)44-53-42  
Оренбург (3532)37-68-04  
Пенза (8412)22-31-16  
Пермь (342)205-81-47  
Ростов-на-Дону (863)308-18-15  
Рязань (4912)46-61-64  
Самара (846)206-03-16  
Санкт-Петербург (812)309-46-40  
Саратов (845)249-38-78  
Севастополь (8692)22-31-93  
Симферополь (3652)67-13-56  
Казахстан (7172)727-132

Смоленск (4812)29-41-54  
Сочи (862)225-72-31  
Ставрополь (8652)20-65-13  
Сургут (3462)77-98-35  
Тверь (4822)63-31-35  
Томск (3822)98-41-53  
Тула (4872)74-02-29  
Тюмень (3452)66-21-18  
Ульяновск (8422)24-23-59  
Уфа (347)229-48-12  
Хабаровск (4212)92-98-04  
Челябинск (351)202-03-61  
Череповец (8202)49-02-64  
Ярославль (4852)69-52-93